

# 90% FINANCING

## Panoramic View

**1 BEDROOM**  
From \$26,000

**2 BEDROOM**  
From \$35,500

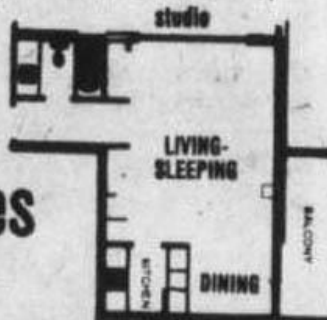
**STUDIO**  
From \$20,000

- ★ 2 Resident Managers
- ★ Fridge, stove
- ★ Laundries on alternate floors
- ★ Drapes
- ★ 3 High-Speed Elevators
- ★ Controlled Entry
- ★ Underground Parking
- ★ Pool
- ★ Sauna Baths
- ★ Whirl Pool
- ★ Putting Green
- ★ Bowling Green
- ★ ½ Block to Beacon Hill Park
- ★ 2 blocks to downtown
- ★ Workshop

SECURITY, SAFETY  
HI-RISE CONCRETE

### 10% Mortgages

Open 2-8 Daily



## Orchard House

Sales office at No. 2310 - 647 Michigan Street, James Bay  
Phone 382-8231 or 382-8232